



BRECKENRIDGE LETTINGS

North Street, Winkfield, SL4



Modern detached 4 bedroom family home offering spacious accomodation. Situated in a popular location for commuter links the property also has a super private garden. Short term lets available

Available - Immediately

£4000 Per Calendar Month

Unfurn / Part Furn



BRECKENRIDGE LETTINGS

- Four Bedrooms
- Two Bathrooms
- Kitchen/Breakfast Room
- Drawing Room with Log Burner
- Large Private Garden
- Popular Location for Commuter Links





Energy Efficiency Rating		Environmental Impact (CO ₂) Rating	
Current	Potential	Current	Potential
Very energy efficient - lower running costs		Very environmentally friendly - lower CO₂ emissions	
A (92-100)		A (92-100)	
B (81-91)		B (81-91)	
C (69-80)		C (69-80)	
D (55-68)		D (55-68)	
E (39-54)		E (39-54)	
F (21-38)		F (21-38)	
G (1-20)		G (1-20)	
Not energy efficient - higher running costs		Not environmentally friendly - higher CO₂ emissions	
89	91		
EU Directive 2002/91/EC		EU Directive 2002/91/EC	
England & Wales		England & Wales	

All viewings are strictly by appointment or by e-mail.

Please be advised that any information supplied by the agent is given without any warranty and all negotiations are on a subject to contract basis until a tenancy agreement has been engrossed. Satisfactory references are always required before a tenancy agreement is signed. In addition to the rental and security deposit there is a charge for the tenancy agreement and an Inventory/Check-in procedure.

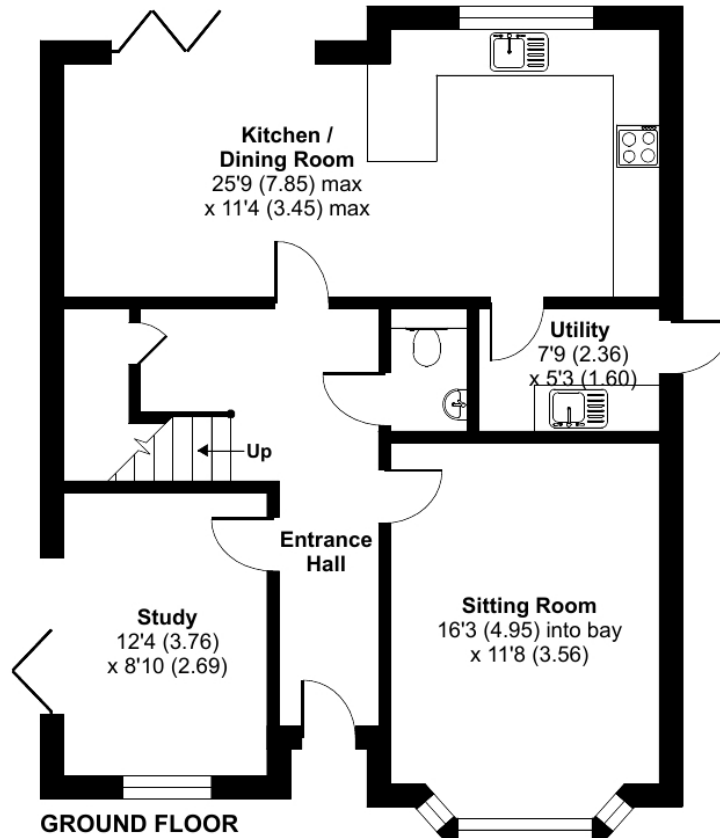
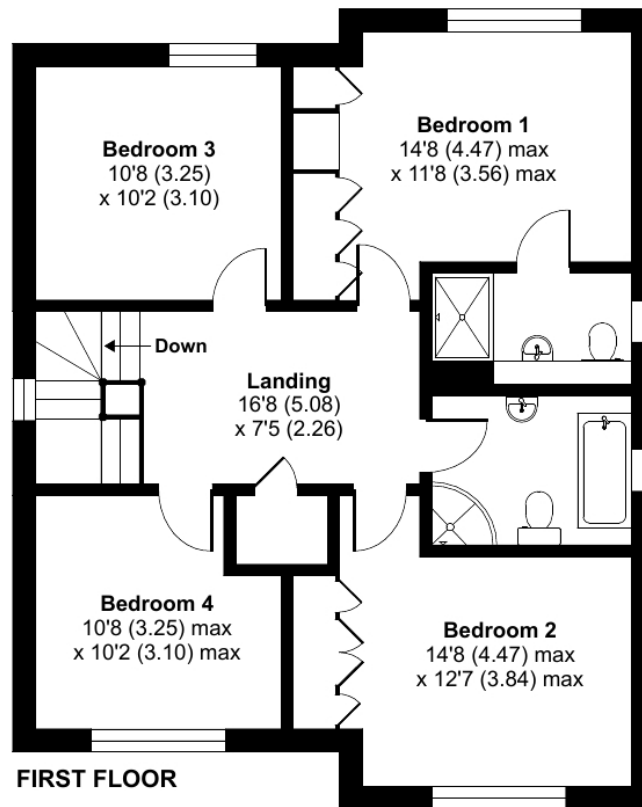
These particulars or any other media, printed or downloaded, do not form part of any contract and must not be relied upon. All measurements mentioned within the particulars are approximate and are given as a guide only.

Email: contact.us@breckenridge-lettings.co.uk

Oaklands, North Street, Winkfield, Windsor, SL4

Approximate Area = 1614 sq ft / 149.9 sq m

For identification only - Not to scale



Floor plan produced in accordance with RICS Property Measurement Standards incorporating International Property Measurement Standards (IPMS2 Residential). © nichecom 2023. Produced for Breckenridge Lettings Ltd. REF: 948178