



BRECKENRIDGE
LETTINGS

Windlemere House, Westwood Road, GU20



A unique and spacious two/three bedroom top floor apartment situated in stunning grounds approaching 25 acres set behind gates

Available - 05/08/2024

£1800 Per Calendar Month

Unfurn / Part Furn



BRECKENRIDGE LETTINGS

- Two/Three Bedrooms
- Kitchen/Breakfast Room
- Large Living/Dining Room
- Grounds approaching 25 Acres
- Lake
- Set Behind Gates





Energy Efficiency Rating		Environmental Impact (CO ₂) Rating	
Current	Potential	Current	Potential
<p>Very energy efficient - lower running costs</p> <p>92-100 A</p> <p>81-91 B</p> <p>69-80 C</p> <p>55-68 D</p> <p>39-54 E</p> <p>21-38 F</p> <p>1-20 G</p> <p>Not energy efficient - higher running costs</p>		<p>Very environmentally friendly - lower CO₂ emissions</p> <p>92-100 A</p> <p>81-91 B</p> <p>69-80 C</p> <p>55-68 D</p> <p>39-54 E</p> <p>21-38 F</p> <p>1-20 G</p> <p>Not environmentally friendly - higher CO₂ emissions</p>	
62	81		
England & Wales	EU Directive 2002/91/EC	England & Wales	EU Directive 2002/91/EC

All viewings are strictly by appointment or by e-mail.

Please be advised that any information supplied by the agent is given without any warranty and all negotiations are on a subject to contract basis until a tenancy agreement has been engrossed. Satisfactory references are always required before a tenancy agreement is signed. In addition to the rental and security deposit there is a charge for the tenancy agreement and an Inventory/Check-in procedure.

These particulars or any other media, printed or downloaded, do not form part of any contract and must not be relied upon. All measurements mentioned within the particulars are approximate and are given as a guide only.

Email: contact.us@breckenridge-lettings.co.uk

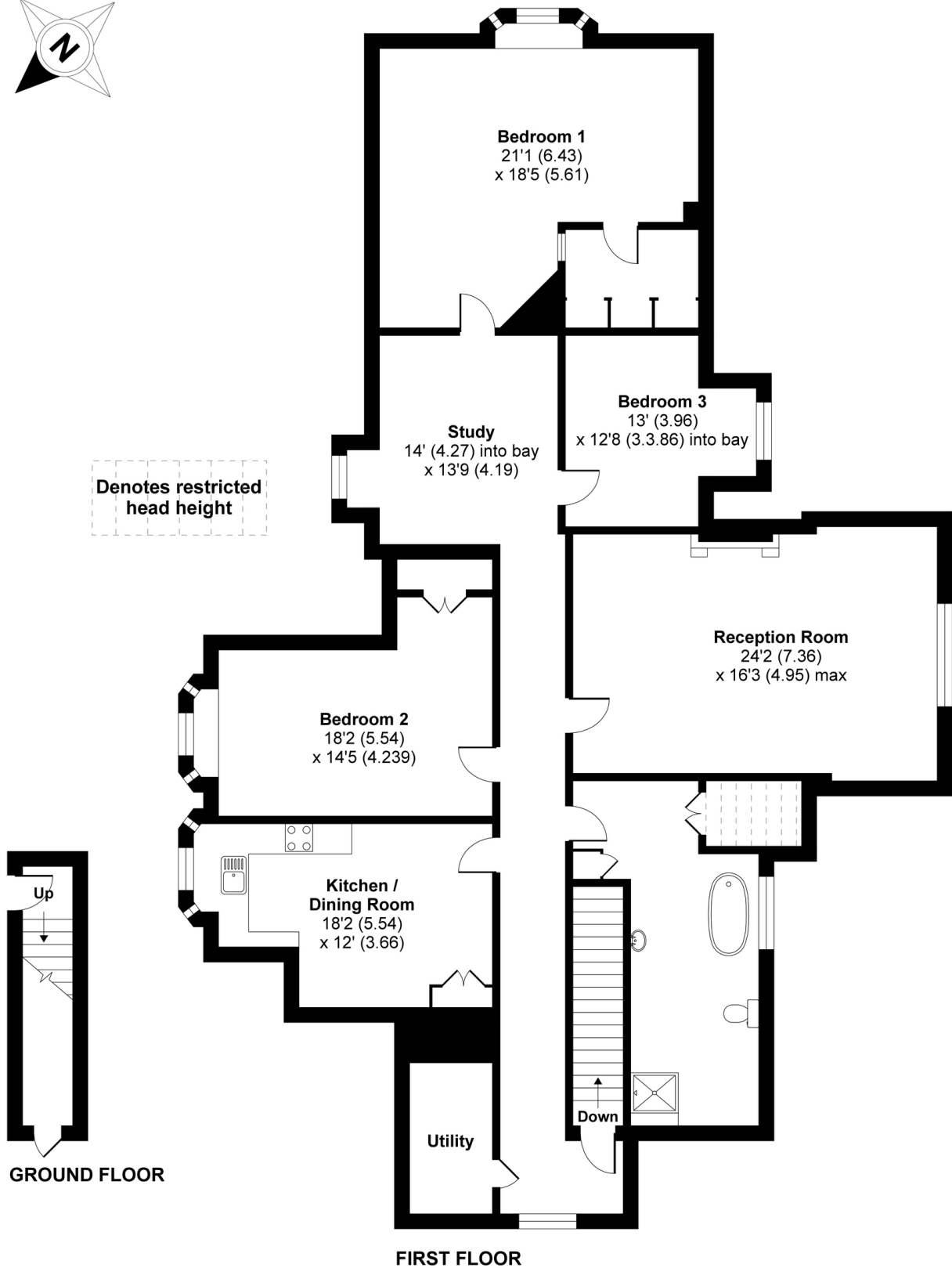
Windlemere House, Westwood Road, Windlesham, GU20

Approximate Area = 2269 sq ft / 210.8 sq m

Limited Use Area(s) = 34 sq ft / 3.2 sq m

Total = 2282 sq ft / 211.9 sq m

For identification only - Not to scale



Floor plan produced in accordance with RICS Property Measurement Standards incorporating International Property Measurement Standards (IPMS2 Residential). © n/checom 2021. Produced for Breckenridge Lettings Ltd. REF: 750064